

**Step Neuchâtel-SME**

**TB 12**

**Traitements des eaux (moyennes journalières)**

**Période du lundi 1 septembre 2014 au mardi 30 septembre 2014**

Date et Visa :

Page 1/1

Nombre de valeurs dépassant les normes

DBO5	0
Corg	3
Ptot	0
MES	0

**Polluants :**

DBO5	mgO <sub>2</sub> /l
Corg	mgC/l
DCO	mgO <sub>2</sub> /l
MES	mg/l
Ptot	mg/l

		E_Step		
		Min	Moy.	Max
m3		11262	13310	19030
DBO5	mgO <sub>2</sub> /l	280	320	370
Corg	mgC/l	147.0	170.2	239.0
DCO	mgO <sub>2</sub> /l	356	577	1004
MES	mg/l			
Ptot	mg/l	4.66	8.20	18.70

**Epu. phys.**

		E_Biologie		
		Min	Moy	Max
m3		12369	14382	16854
DBO5	mgO <sub>2</sub> /l	130	132	140
Corg	mgC/l	67.9	85.5	133.0
DCO	mgO <sub>2</sub> /l	212	287	357
MES	mg/l	107.6	158.8	309.6
Ptot	mg/l	2.39	3.62	5.88

**Biostyr**

		S_Biostyr		
		Min	moy.	Max
m3		3527	4395	5194
DBO5	mgO <sub>2</sub> /l	8	12	14
Corg	mgC/l	9.2	12.0	17.0
DCO	mgO <sub>2</sub> /l	30	40	57
MES	mg/l	8.4	15.8	26.0
Ptot	mg/l	0.30	0.46	0.66

		S.Step	
		Max.	
m3		15586	
DBO5	mgO <sub>2</sub> /l	8	
Corg	mgC/l	14.6	
DCO	mgO <sub>2</sub> /l	42	
MES	mg/l	10.1	
Ptot	mg/l	0.30	

**Norme**

DBO5	mgO <sub>2</sub> /l	10.00
Corg	mgC/l	10.00
DCO	mgO <sub>2</sub> /l	30.00 objectif
MES	mg/l	10.00
Ptot	mgP/l	0.30

**Polluants :**

DBO5	mgO <sub>2</sub> /l
Corg	mgC/l
DCO	mgO <sub>2</sub> /l
MES	mg/l
Ptot	mg/l

		S_Dynasand		
		Min	Moy	Max
m3		11394	13206	15586
DBO5	mgO <sub>2</sub> /l	4	6	8
Corg	mgC/l	9.3	11.2	14.5
DCO	mgO <sub>2</sub> /l	25	30	42
MES	mg/l	2.0	5.5	10.0
Ptot	mg/l	0.14	0.21	0.30

		S.Step	
		Moy.	
m3		13206	
DBO5	mgO <sub>2</sub> /l	7	
Corg	mgC/l	11.4	
DCO	mgO <sub>2</sub> /l	31	
MES	mg/l	5.5	
Ptot	mg/l	0.21	

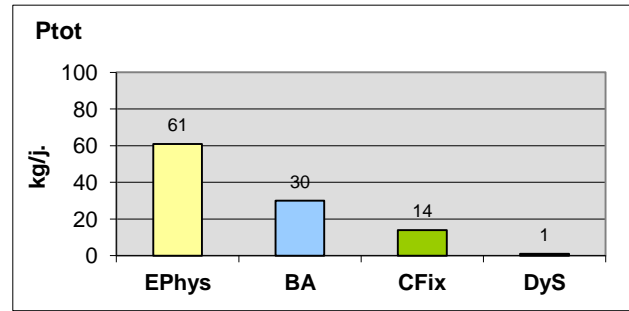
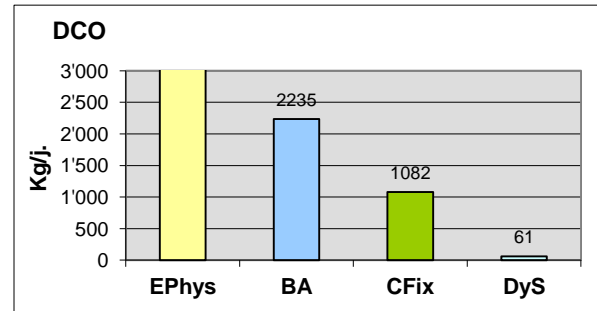
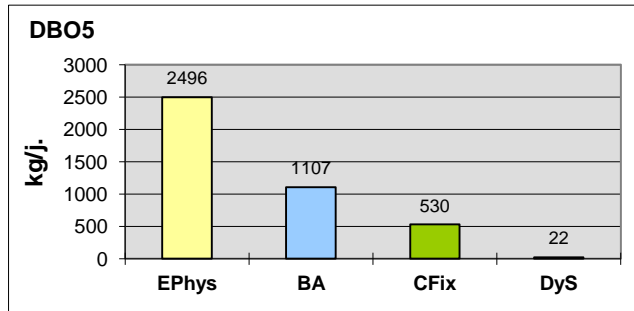
		S_Boues activées			TropPlein	
		Min	moy	Max		
m3		7198	8961	10764	0	
DBO5	mgO <sub>2</sub> /l	6	9	12	132	
Corg	mgC/l	10.4	12.0	14.2	85.5	
DCO	mgO <sub>2</sub> /l	31	37	48	287	
MES	mg/l	3.6	11.0	16.4	158.8	
Ptot	mg/l	0.23	0.32	0.51	3.62	

Déversement : **X**

**B.act.**

**Lac**

**Abatement, moyennes journalières**



**Rendements globaux :** 98 %      94.7 %      97.5 %